



Thin Film Measurement solution
Software, sensors, custom development
and integration

INSTALLATION INSTRUCTIONS **FOR** **TO SWITCH or Shutter**

I Prerequisites

- a). TFCompanion release 02292012. If you have older release please update to the latest version (Help/Check updates from the main menu)
- b). Switch plug-in (file: SwitchPlugin.plg).
- c). Controller driver (cdcdriver.zip)

II Installation

2.1 Controller driver installation.

- a) Unzip controller driver files on a hard drive of your computer and remember the location.
- b). Connect computer and controller with **USB** cable. You should see “New Hardware found” dialog. Point driver installer to the location where driver files were unzip (on the previous step). You should receive a message that device is installed successfully.
- c). Check the installation: Open Device Manager (ControlPanel/System/Device Manager). You should see a new serial port (COM #) on the list .

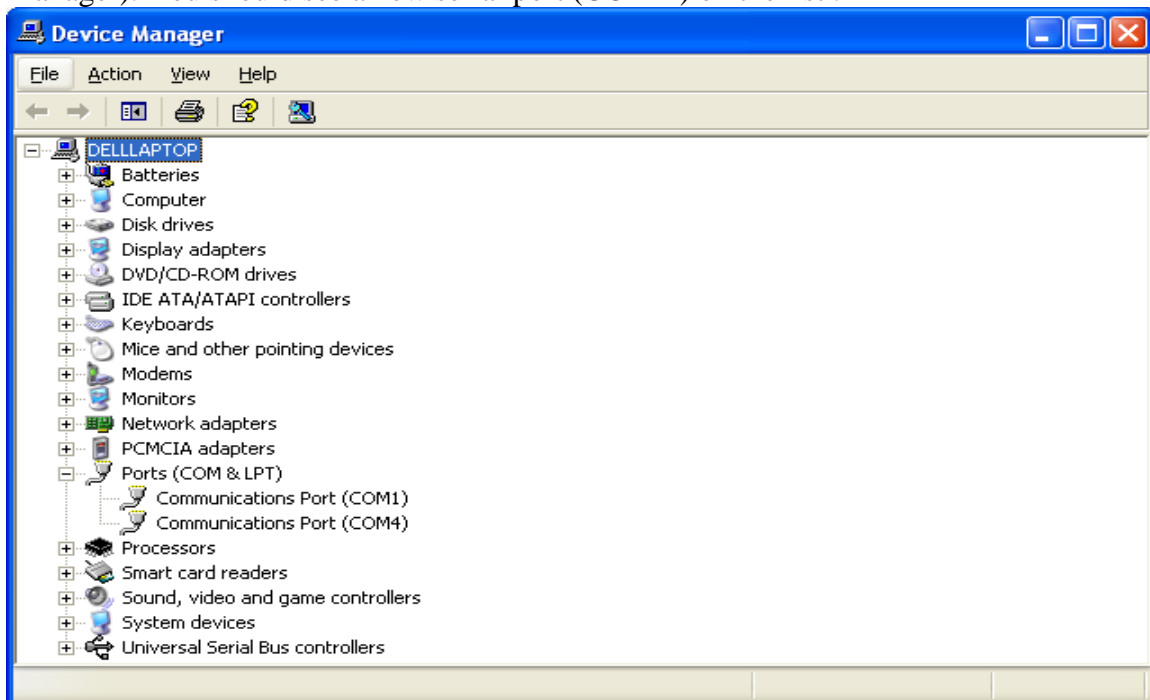


Fig., 1 Port COM 4 added in the Device Manager after controller installation.

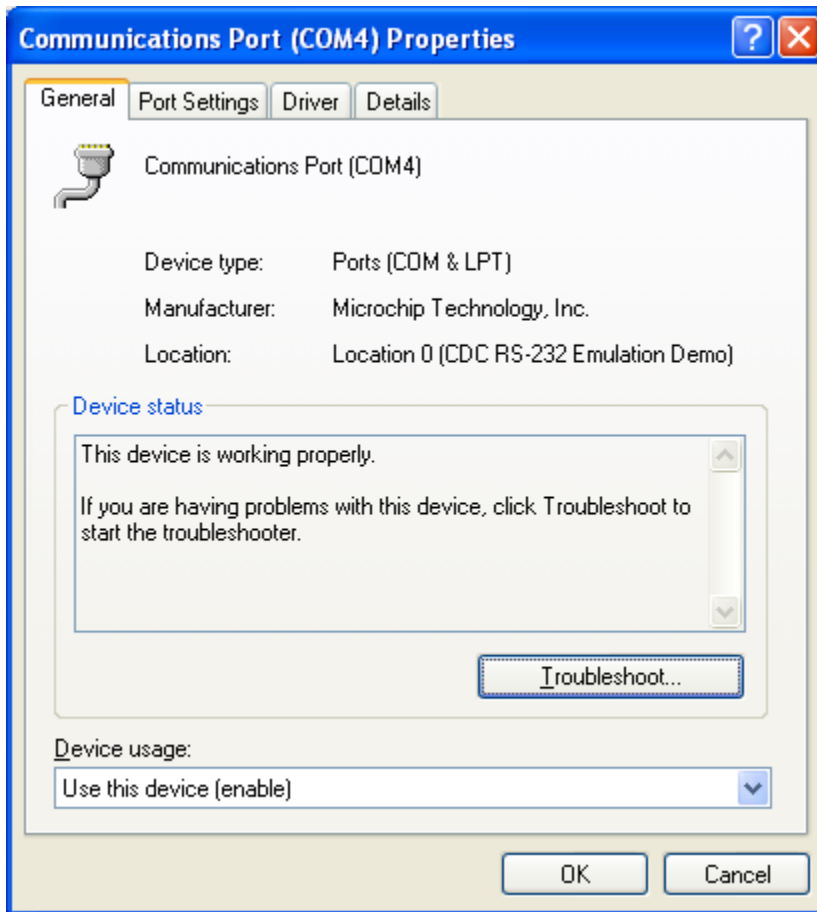


Fig. 4 COM 4 properties

2.2. Installing Switch Plugin

- a). Start TFCompanion software (you need to start it in Hardware integrated mode Admin_hdw user)
- b). Select Help/Load Plugin – you will prompted to select the plugin file: select SwitchPlugin.plg. After installation you should receive confirmation message that plugin is installed successfully.

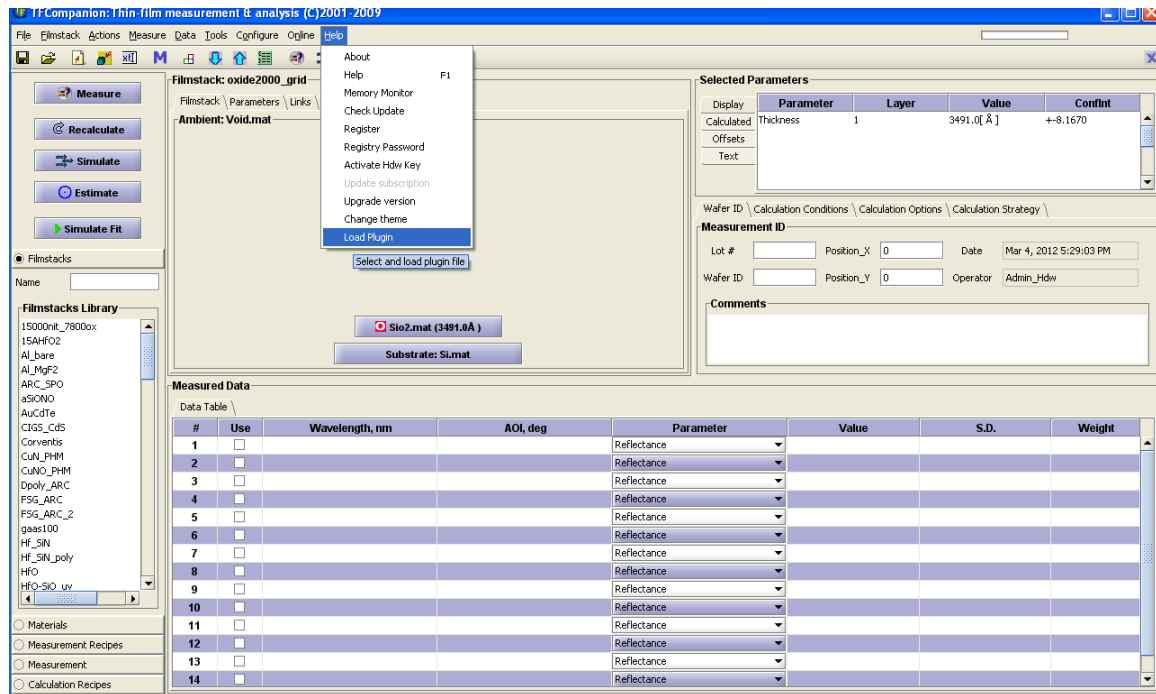


Fig. 3 Importing and installing plugin

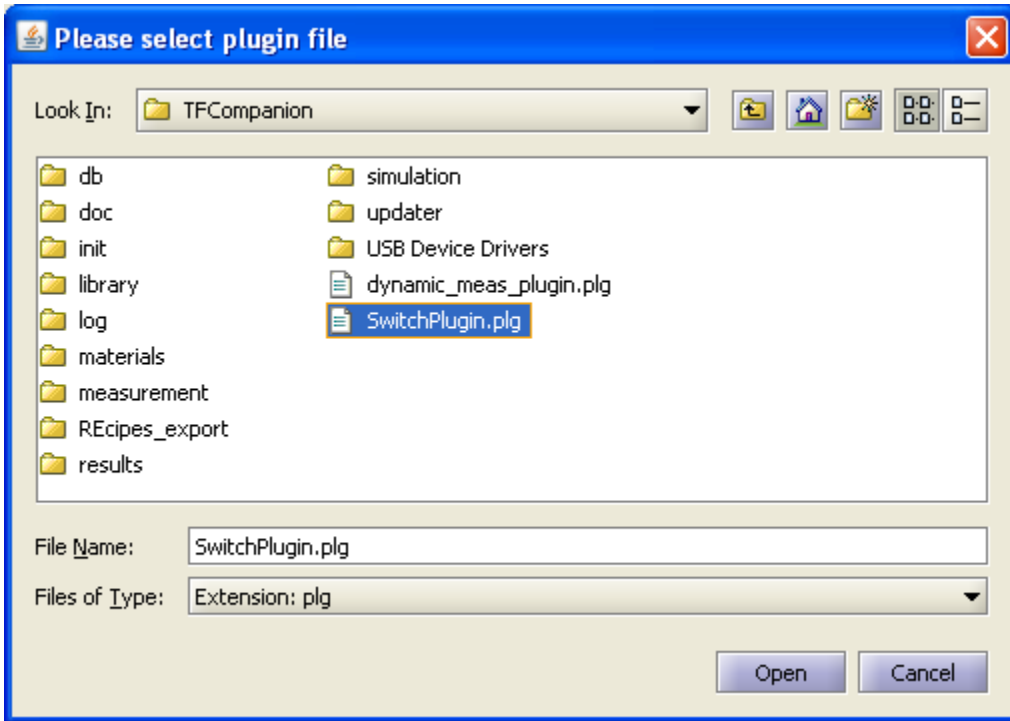


Fig. 4 Selecting plugin to load.

c) Close and restart TFCompanion. Select Action/Switch Controller – the controller dialog should appear.

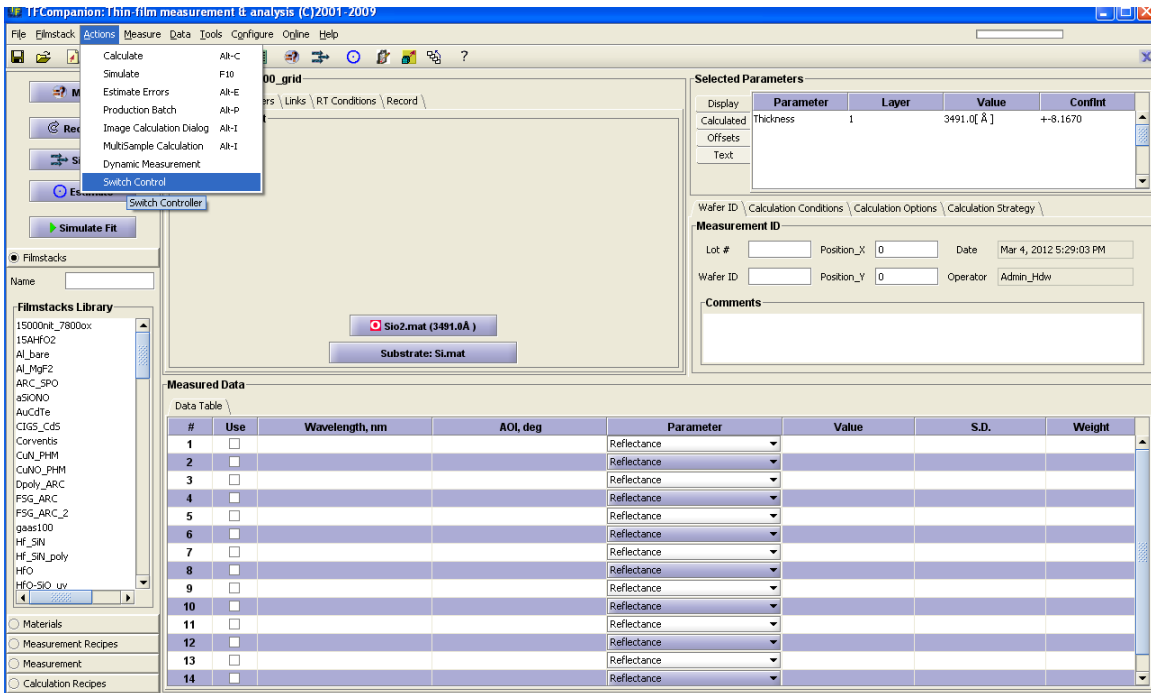
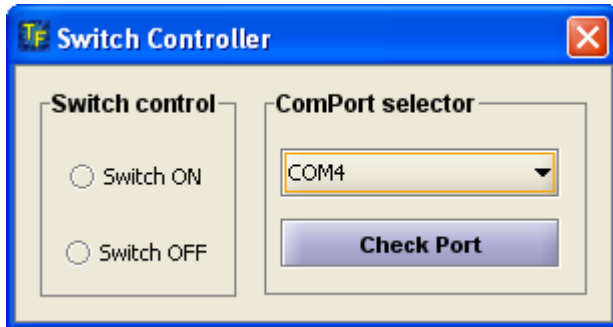


Fig. 5 Starting Switch controller

At this point you have all cable connected: USB cable (computer to controller), 24 power adapter (connected to controller), Switch cable connected to controller

In the dialog, select the serial port from the list and click Check – this will test that controller is connected to the port.



Fig, 6 Checking that port is connected to controller

Once controller is connected you can toggle switch with ON/OFF radio buttons controls. During TFCompanion session you need to select the port only once, after that just toggle switch on/off.

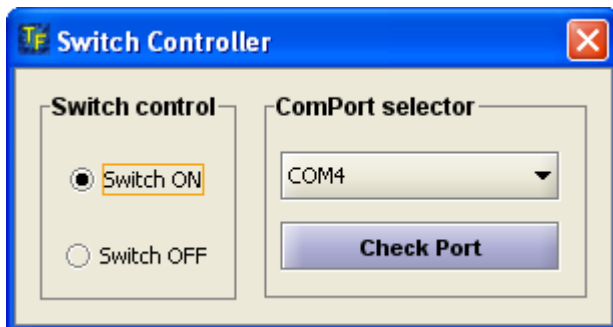
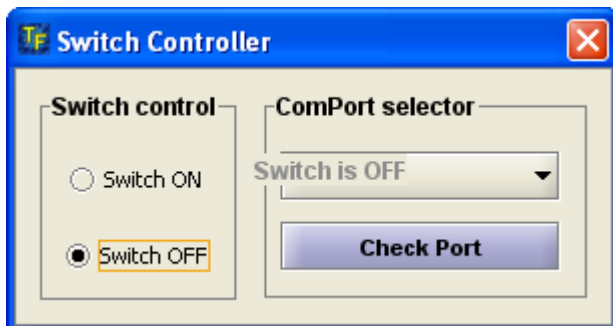


Fig.7. Switch is engaged.



Fig, 8 Switch is OFF.